

JFC FIRE 315/H T2/T4 UN

GENERAL DATA



CIRCULAR AXIAL JET FAN - 400°C/2h

MANUFACTURING FEATURES:

The JFC FIRE F400 models are composed of an axial fan and two silencers.

FAN:

- Axial fan with reinforced tubular casing, made of steel sheet. The connection box is accessible by the side from a removable door.
- Standard asynchronous squirrel-cage motor with IP-55 protection and Class H insulation, CERTIFIED 400°C/2h. Standard voltages 230/400V 50Hz) for 1 speed motors and 400V 50Hz for 2 speed motors.

SILENCERS:

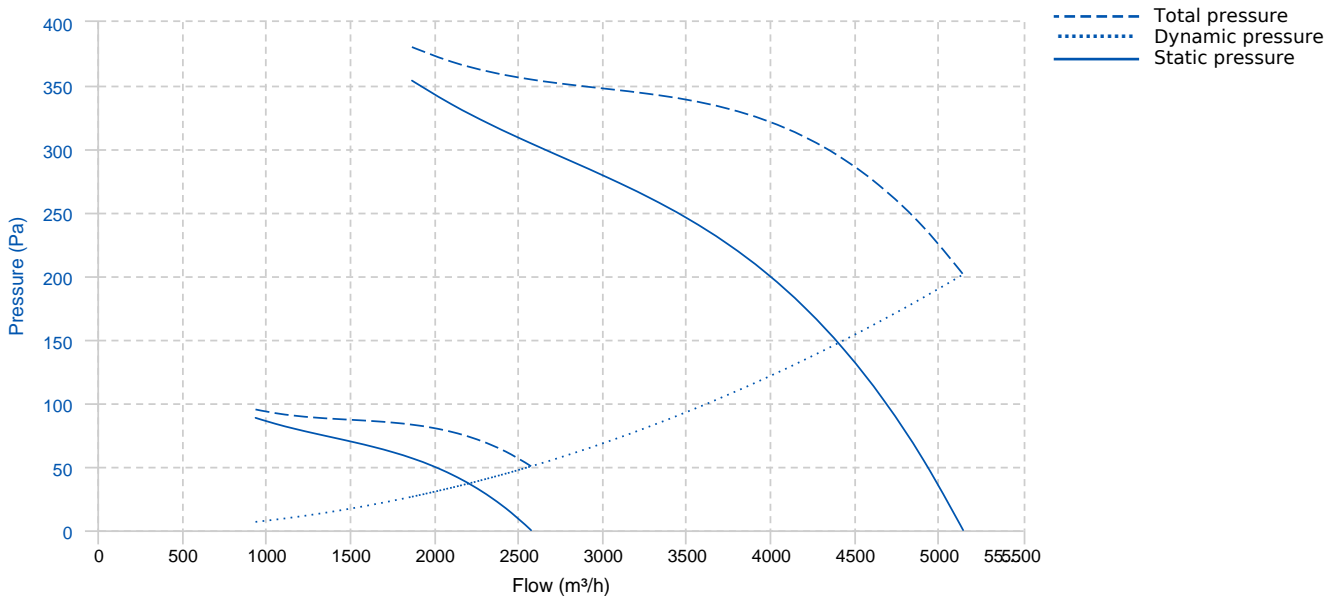
- Casing in galvanized steel. Inner duct made of perforated galvanized steel sheet.
- The silencers are filled with mineral wool with high acoustic absorption properties, preventing most of the fan noise to be propagated.
- Unidirectional JFC FIRE F400 UN is equipped with a protection guard at the inlet side and a deflector at the outlet. The deflector directs the air away from the ceiling and obstacles like beams or ducting, sweeping the whole volume of air to the closest extraction point.
- Reversible JFC FIRE F400 RE is equipped with a protection guards on both sides.

APPLICATIONS:

- Conceived for car parkings and large spaces where polluted air, or smoke from an accidental fire, needs to be removed effectively.
- An optimized design minimizes the height needed for their installation and assures a silent operation.
- Maximum working temperature: 60°C.

Official homologation by the European laboratory APPLUS according to EN 12101-3:2015
Certification Nr: 0370-CPR-2273

PERFORMANCE CURVE



TECHNICAL DATA

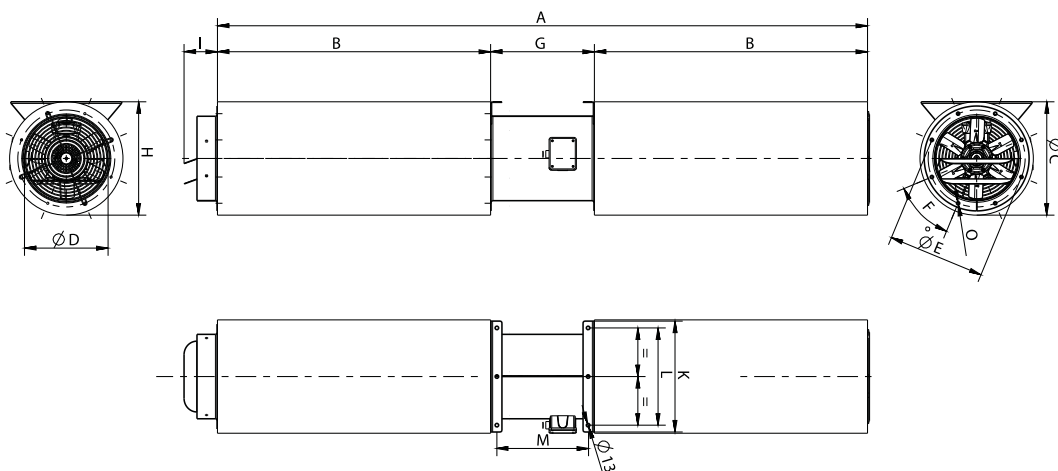
Fan

Approx. weight	93 kg	Max. Flow	5150 m³/h
----------------	-------	-----------	-----------

Motor

Power	1,1/0,18 kW	RPM	2850/1450	I max. (400V)	2,36/0,59 A	Size	80
Approx. weight	11.2 kg	Efficiency (%)	76/70 %	FP	0.84/0.76		

DIMENSIONS



Dimensions (mm)

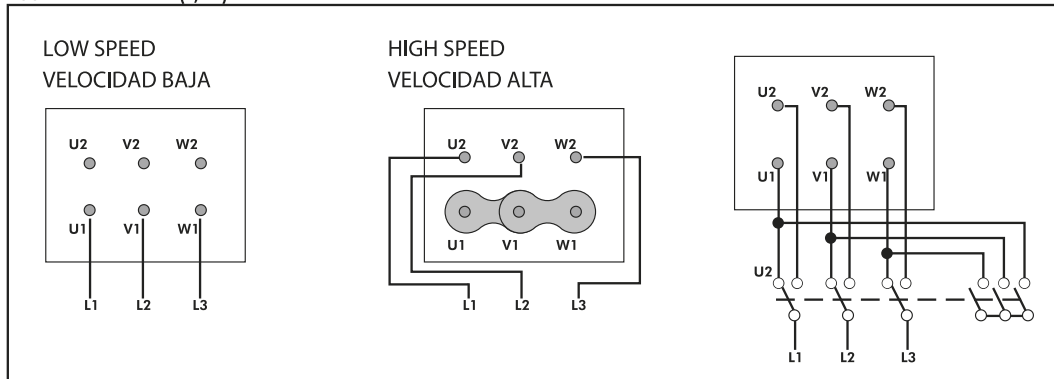
A	1788,5	B	720	F	8x45°	G	348,5	H	415
I	122	K	406	L	356	M	301	O	M8

Dimensions (mm)

Thrust (N)	33/8	ØC	415	ØD	306	ØE	355
------------	------	----	-----	----	-----	----	-----

WIRING DIAGRAM

400V DAHLANDER (Y,YY)



ACCESSORIES



**SAFETY SWITCH FOR 400°C/2h
INT 400 25A 6P**



**SAFETY SWITCH FOR 400°C/2h
INT F400 (GENERIC)**



**ANTI-VIBRATION SPRING BLOCK
AVS (GENERIC)**



**SAFETY SWITCH
INT 25 6P A**



**FREQUENCY SPEED CONTROLLER
SFC (GENERIC)**