

RK BOX PLUS

GENERAL DATA



VENTILATION BOX WITH BACKWARD IMPELLER

MANUFACTURING FEATURES:

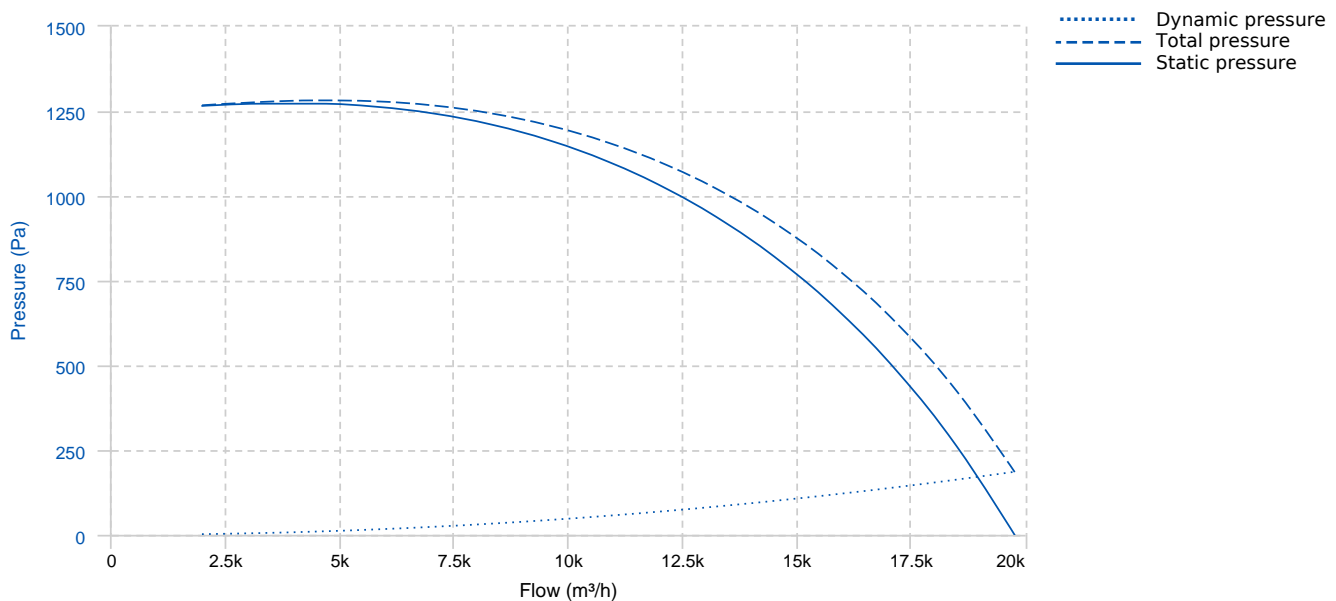
- Ventilation box with 30 mm aluminum profile structure, nylon corners, galvanized sandwich panels with internal insulation rockwool (25mm thickness) class A1 (non-combustible) of 90kg/m³ density. All panels are equipped with "fastening system" for the quick assembly and disassembly whenever required, either for cleaning, maintenance or exchanging of panels.
- Centrifugal fan with motor coupled directly to the impeller, plugfan type.
- Circular inlet to facilitate duct connection. Open outlet.
- Models with AC motor inside the air flow. Standard asynchronous squirrel cage motor with IP-55 protection and Class F insulation. Standard voltages of 230V 50Hz for single phase motors, 230/400V 50Hz for three phase motors up to 4kW and 400/690V 50Hz for higher powers 1 speed and 400V for 2 speed motors.
- Backward curved single inlet impeller of high performance with self-cleaning system made of steel. Balanced statically and dynamically at origin.
- Exchangeable panels.

APPLICATIONS:

Designed for inline installation, they are suitable for:

- Air renewal in buildings and industries.
- Smoke extraction.
- Maximum working temperature (ambient and airflow): 50°C for single phase motors and 60°C for three phase motors.

PERFORMANCE CURVE

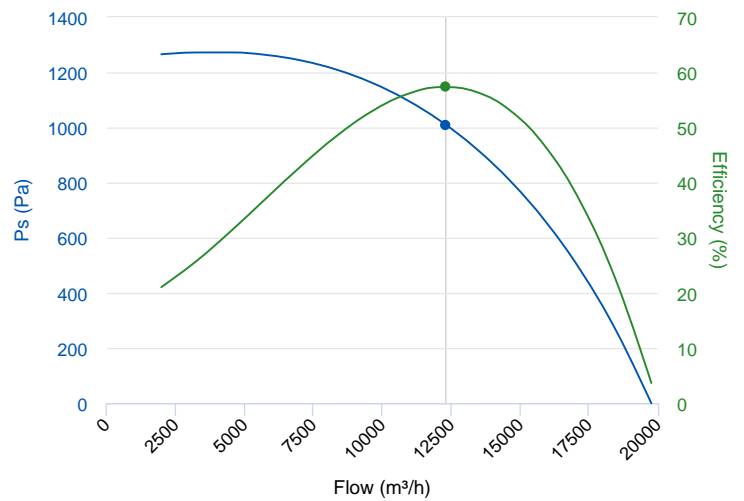


TECHNICAL DATA

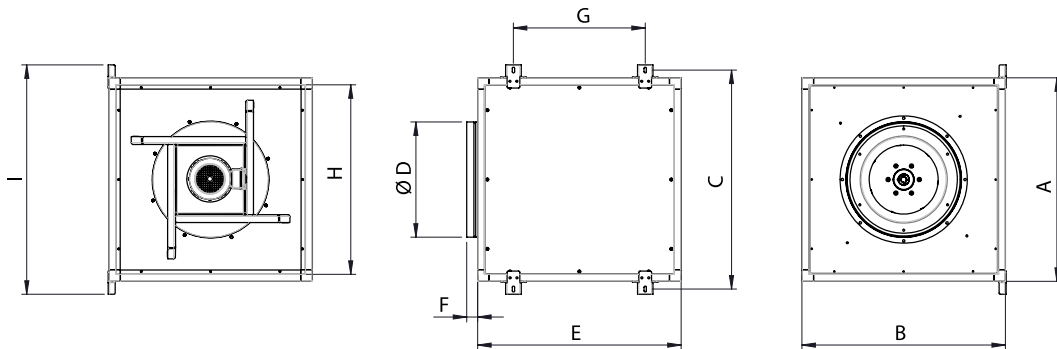
Fan							
RPM	1455	Approx. weight	151 kg	Max. Flow	19765 m ³ /h		
Motor							
Power	7,5 kW	RPM	1455	I max. (400V)	14,1 A	I max. (690V)	8,17 A
Size	132M	Approx. weight	68 kg	Efficiency (%)	90.4 %	FP	0.86

ERP DATA

Fan data sheet		
Fan type	Unit for non-residential ventilation (LOT 6)	
Typology	Unidirectional	
reports.other	None	
Type of driver	None	
Motor power (kW)	7.5	
	Fan values	ERP Requirements 2018
Max. efficiency (%)	57.35	53.48
Effic. Heat recovery (%)	-	
Pabs (kW)	6.367	
Flow (m ³ /h)	12307.69	
Static pressure (Pa)	1009.96	
Speed (m/s)	10.97	
SFP (W/m ³ /s)	1862.22	



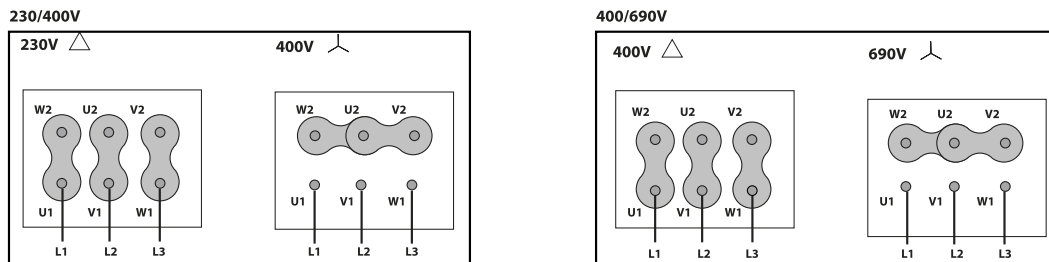
DIMENSIONS



Dimensions (mm)

A	1120	B	1120	C	1187	D	708	E	1120
F	47	G	810	H	1060	I	1232		

WIRING DIAGRAM



ACCESSORIES

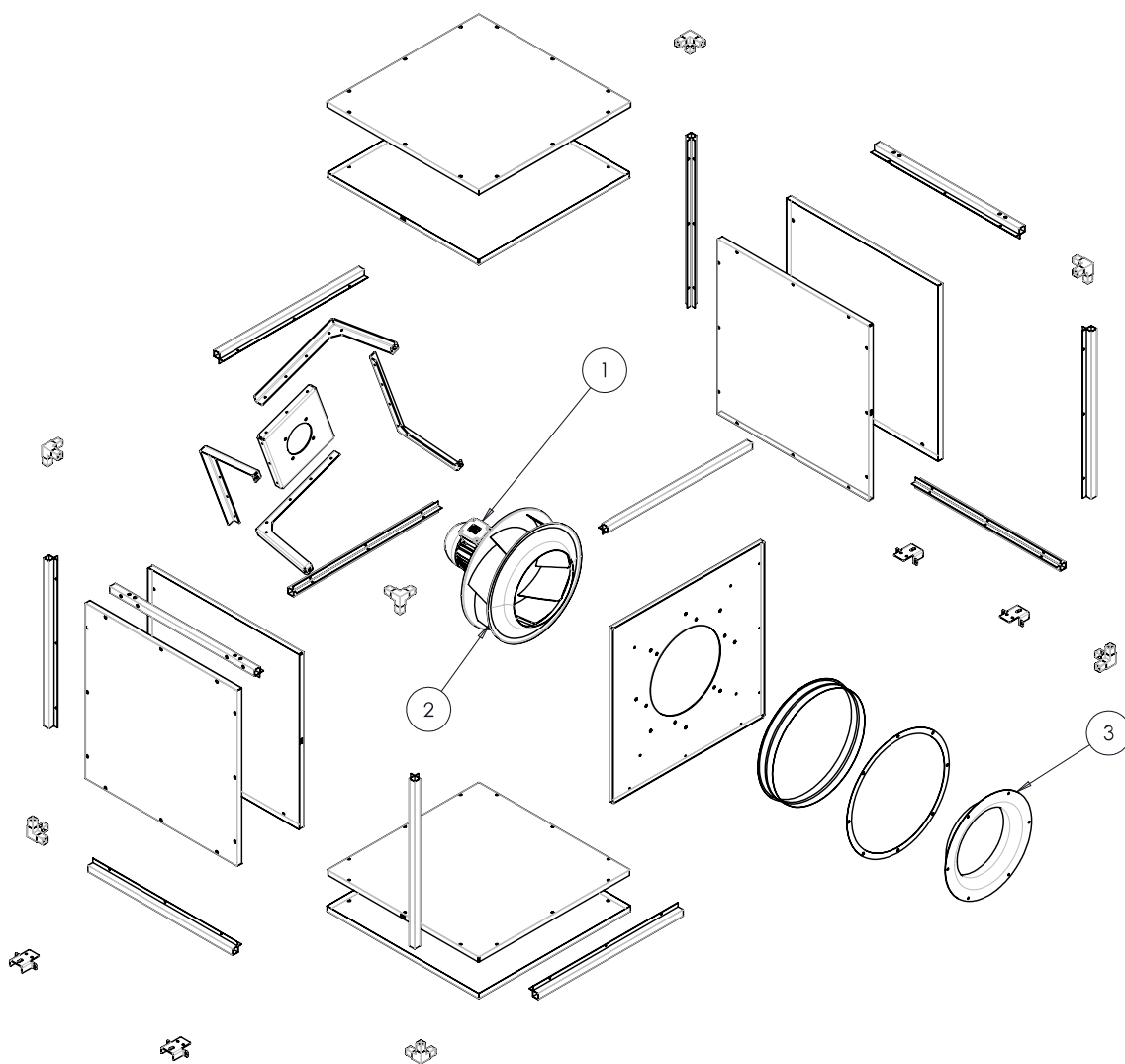


SAFETY SWITCH
INT 25 3P A



FREQUENCY SPEED CONTROLLER
SFC 400 III 16A *

SPARE PARTS



	Code	Model	Qty
1	721001185	MOTOR 7,5kW T4 B5 400/690V	x1