

CBRE PLUS EEC

GENERAL DATA



CENTRIFUGAL FAN IN SOUNDPROOF BOX WITH EXTERNAL ROTOR EC MOTOR

MANUFACTURING FEATURES

- Ventilation box with 30 mm aluminum profile structure, nylon corners, galvanized sandwich panels with internal insulation rockwool (25mm thickness) class A1 (non-combustible) of 90kg/m³ density. All panels are equipped with "fastening system" for the quick assembly and disassembly whenever required, either for cleaning, maintenance
- Plug-type fan with self-cleaning impeller with back curved blades (backward), high performance and single inlet, direct driven. Dynamically balanced to minimize noise and vibration. Polyamide reinforced impeller for models 155 and 190 and aluminum impellers for the rest.
- High efficiency (IE4 for three phase motors and IE5 for single motors), low noise external rotor EC motor. Speed control through a 0-10V or PWM signal. Single-phase 230V 50/60Hz power supply for models 155 to 310 and three-phase 400V 50/60Hz for sizes 355 and 630. IP44 motor and class B insulation.
- The box is supplied with a safety switch with potentiometer for a total regulation
- Circular suction mouth to facilitate duct connection. Open outlet.

APPLICATIONS

Designed for duct installation, they are indicated for:

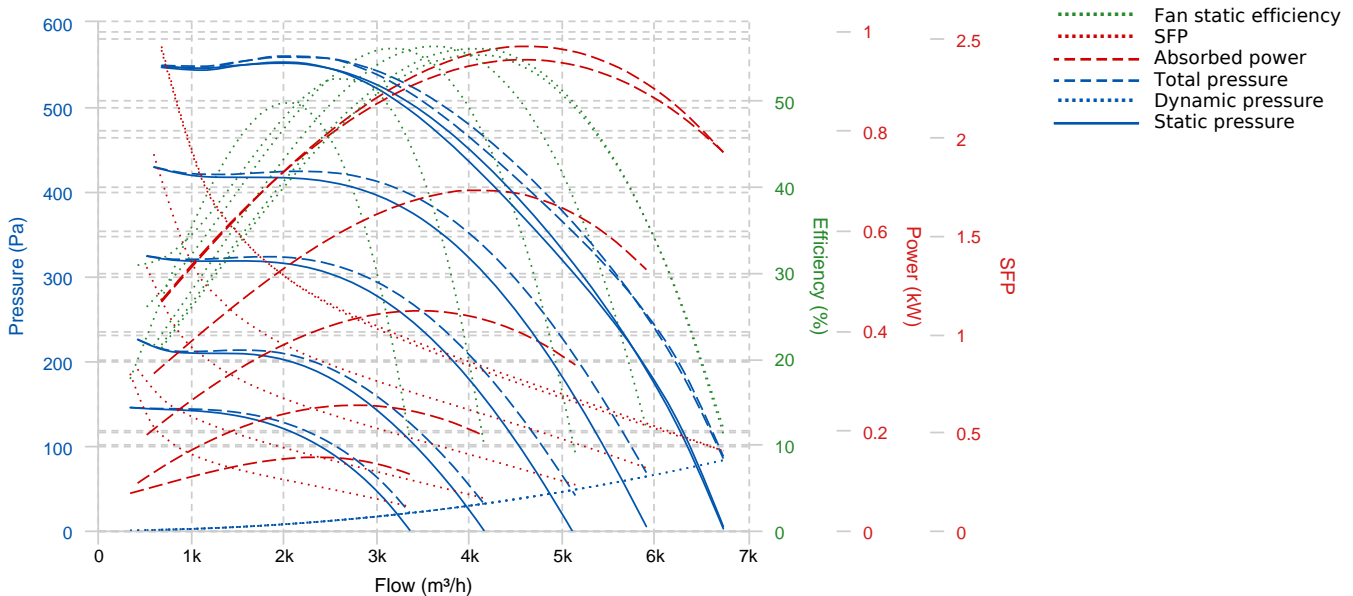
- Air renewal in all types of buildings and industries.
- Air renewal in office buildings, shopping centers, ware houses, etc.
- Kitchen hoods.

Working temperature range from -20°C to 60°C.

UNDER REQUEST

- Fan (size between 250 and 450) with k-factor reading.

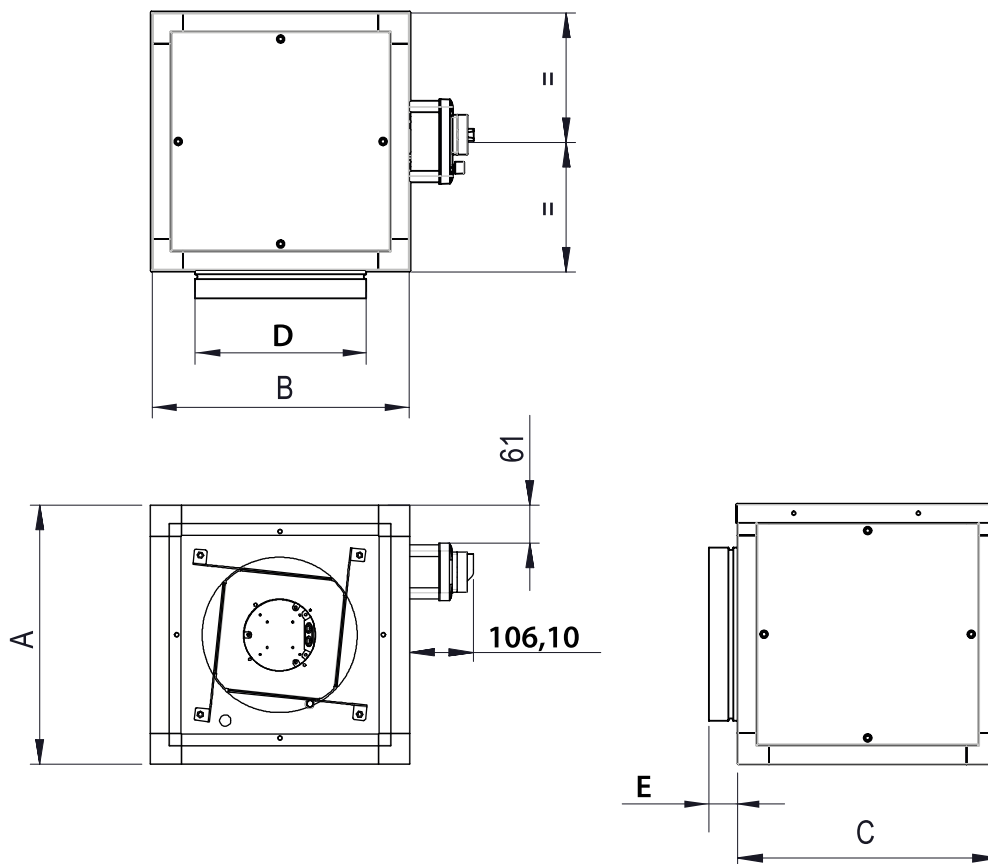
PERFORMANCE CURVE



TECHNICAL DATA


Fan							
RPM	1450	Approx. weight	46 kg	Max. Flow	6730 m ³ /h		
Motor							
Power	1,006 kW	RPM	1450	I max. (400V)	1,67 A	Approx. weight	12 kg

DIMENSIONS



Dimensions (mm)									
A	692	B	692	C	692	D	500	E	56

WIRING DIAGRAM

Nº	Signal Señal	Colour Color	Specification Especificación
1	L1	Black Negro	AC380V-50/60Hz
2	L2	Black Negro	AC380V-50/60Hz
3	L3	Black Negro	AC380V-50/60Hz
4	Pe	Yellow-Green Amarillo-Verde	

Nº	Signal Señal	Colour Color	Specification Especificación
1	Vcc	Red Rojo	DC10V
2	Vsp	Yellow Amarillo	0-10VDC/PWM
3	GND	Blue Azul	
4	FG	White Blanco	12 Pulse/R

ACCESSORIES



**SPEED CONTROLLER FOR EEC MOTOR
REGC**