

SCA 71 T4 (A2:6)

GENERAL DATA



SHORT CASED AXIAL DIRECT DRIVE FAN WITH CAST ALUMINUM IMPELLER

MANUFACTURING FEATURES:

- Plate axial fan with circular reinforced frame.
 - Modular motor-impeller assembly.
 - Cast aluminum impeller with variable pitch angle.
 - Polyester powder finishing coat.
 - Standard asynchronous squirrel-cage motor with IP-55 protection and Class F insulation.
- Manufactured with standard voltages: 230V 50Hz in single phase motors and 230/400V 50Hz in three phase motors up to 4kW and 400/690V 50Hz for higher powers.

APPLICATIONS:

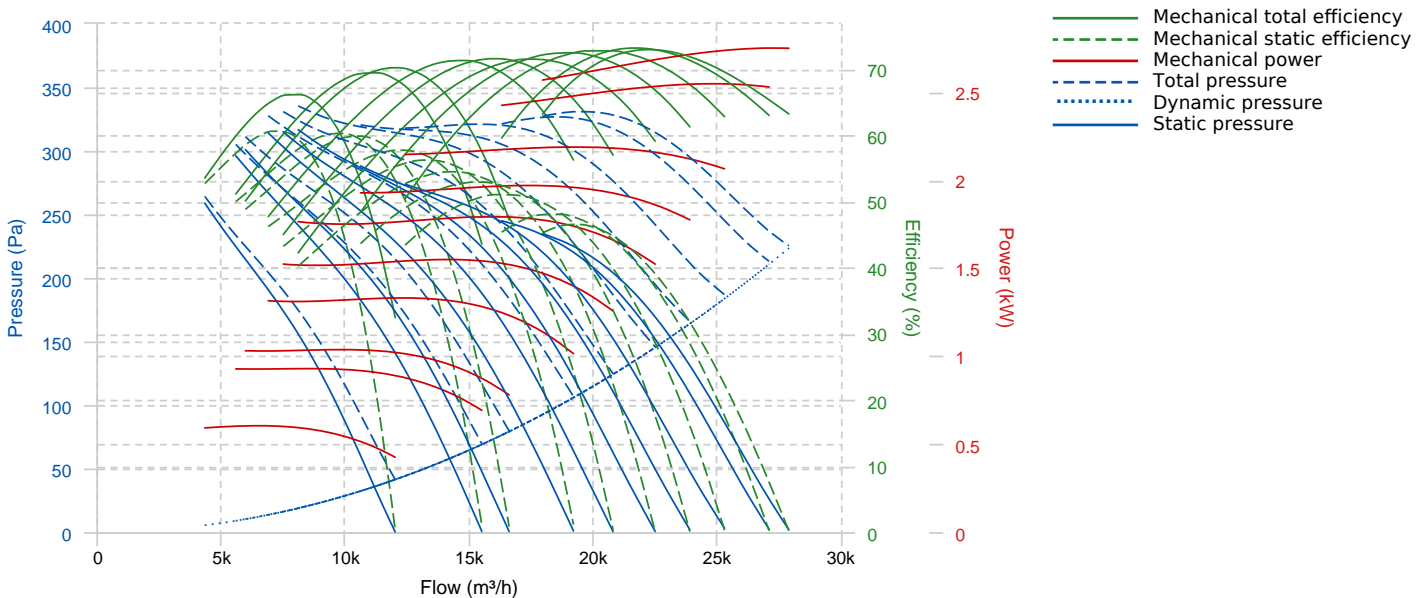
Designed for wall or duct installation, they are suitable for:

- Air renewal in buildings and industries.
- Smoke exhaust (maximum 50-60°C).
- Maximum working temperature: 50°C single phase, 60°C three phase.

UNDER REQUEST:

- Supply impeller (air direction from impeller to motor), 100% reversible impeller.
- 60Hz fans and special voltages.
- Hot-dipped galvanized or stainless steel housing.
- Optional can be adapted an square plate to the frame, to transform it in an axial square frame version fan.

PERFORMANCE CURVE

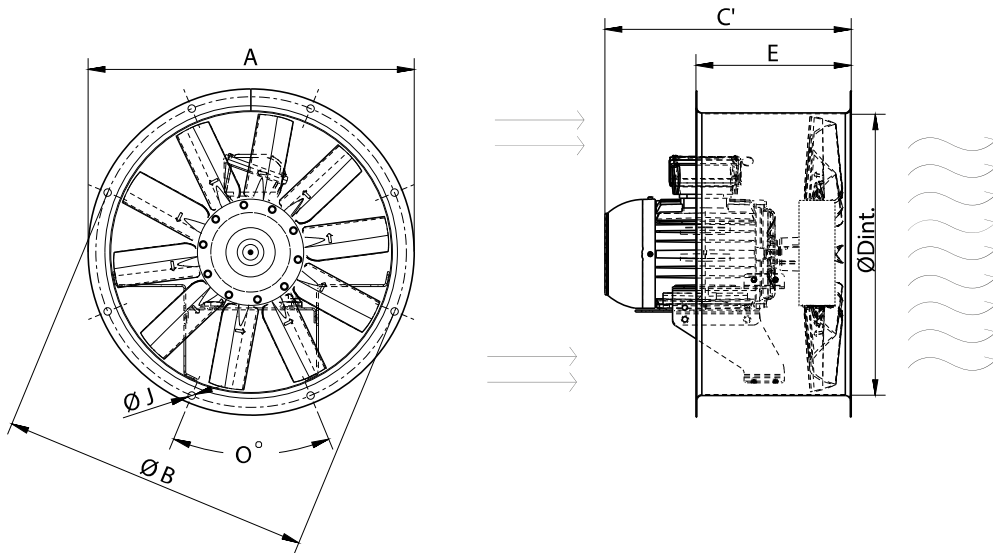


TECHNICAL DATA

Fan

RPM	-	Approx. weight	-	Max. Flow	27910 m³/h
-----	---	----------------	---	-----------	------------

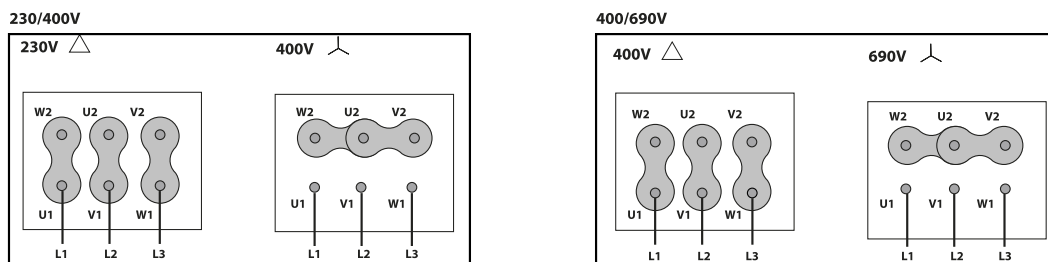
DIMENSIONS



Dimensions (mm)

C' (Mot.T.80)	362	C' (Mot.T.90L)	421	C' (Mot.T.90S)	396	C' (Mot.T.100L)	452	C' (Mot.T.112M)	473
E	350	Ø	16x22,5 ^ø	ØA	802	ØB	770	ØD	715
ØJ	12								

WIRING DIAGRAM



ACCESSORIES



**PROTECTION GUARD FOR LONG CASE FANS
RP 71**



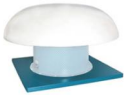
**CASE FANS MOUNTING SUPPORT
MFLCA 71**



**CONNECTION FLANGE
AC 710**



**CIRCULAR-CIRCULAR ANTI-VIBRATION FLANGE
BAD 16**



**AXIAL ROOF FAN KIT
KIT ARF 71**



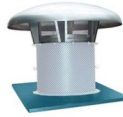
**FREQUENCY SPEED CONTROLLER
SFC (GENERIC)**



**CIRCULAR SILENCER
SIL-C 710/710**



**ANTI-VIBRATING FLANGE 400°/2H
BA-400 71**



**AXIAL ROOF FAN KIT - METALLIC
KIT ARFM 71**



**SAFETY SWITCH
INT (GENERIC)**



**ANTI-VIBRATION SPRING BLOCK
AVS (GENERIC)**