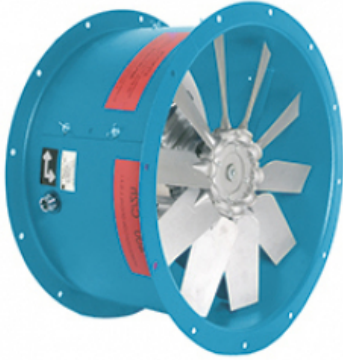


# LCA FIRE 80 T4 (A5:6) F400

## GENERAL DATA



### LONG CASED AXIAL DIRECT DRIVE SMOKE FAN WITH CAST ALUMINUM IMPELLER - 400°C/2h

#### MANUFACTURING FEATURES:

- Long cased axial fan with reinforced body.
- Modular motor-impeller assembly.
- Cast aluminum impeller with variable pitch angle.
- Polyester powder finishing coat.
- Housing with motor access door for easy connection.
- Standard asynchronous squirrel-cage motor with IP-55 protection and Class H insulation certified 400°C/2h. Manufactured with standard voltages: 230/400V 50Hz in three phase motors up to 3kW and 400/690V 50Hz for higher powers.

#### APPLICATIONS:

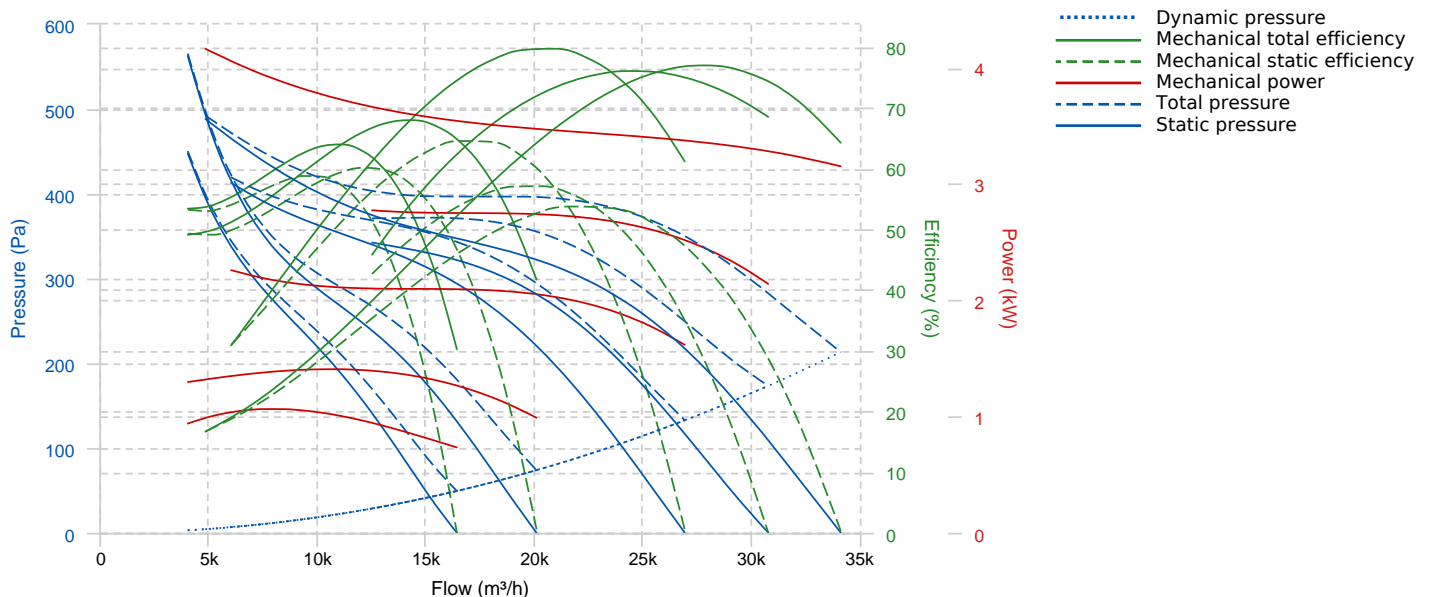
- Designed for inline installation, they are suitable for:
- Smoke emergency exhaust with motor inside the hazardous area.
  - Maximum working temperature: 60°C.

#### UNDER REQUEST:

- Supply impeller (air direction from impeller to motor).
- 100% reversible impeller.

Official homologation by the European laboratory APPLUS according to EN 12101-3:2015 Certification Nr: 0370-CPR-2269

## PERFORMANCE CURVE

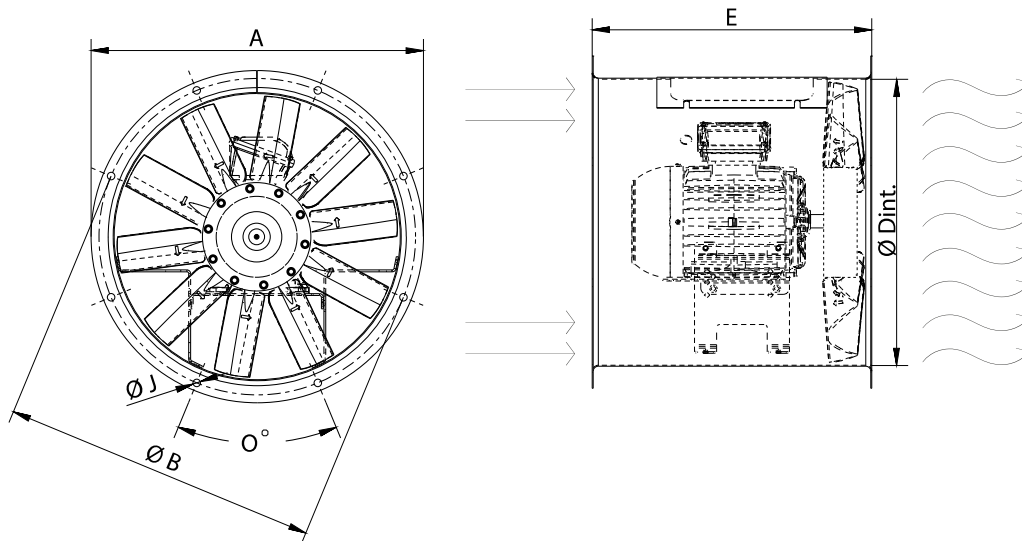


## TECHNICAL DATA

### Fan

RPM	-	Approx. weight	-	Max. Flow	37370 m <sup>3</sup> /h
-----	---	----------------	---	-----------	-------------------------

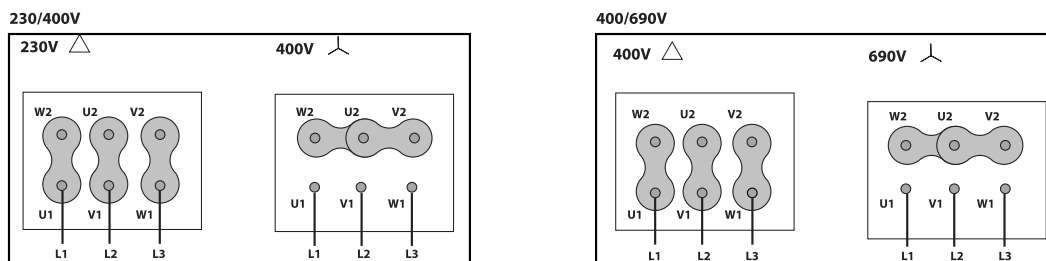
## DIMENSIONS



### Dimensions (mm)

E	600	O	16x22,5°	ØA	892	ØB	860	ØD	801
ØJ	12								

## WIRING DIAGRAM



## ACCESSORIES



**PROTECTION GUARD FOR LONG CASE FANS RP 80**



**CASE FANS MOUNTING SUPPORT MFLCA 80**



**CONNECTION FLANGE  
AC 800**



**CIRCULAR-CIRCULAR ANTI-VIBRATION FLANGE  
BAD 17**



**SAFETY SWITCH  
INT (GENERIC)**



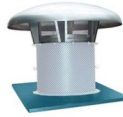
**FREQUENCY SPEED CONTROLLER  
SFC (GENERIC)**



**CIRCULAR SILENCER  
SIL-C 800/800**



**ANTI-VIBRATING FLANGE 400°/2H  
BA-400 80**



**AXIAL ROOF FAN KIT - METALLIC  
KIT ARFM 80**



**SAFETY SWITCH FOR 400°C/2h  
INT F400 (GENERIC)**



**ANTI-VIBRATION SPRING BLOCK  
AVS (GENERIC)**