

BCU FIRE 630 T6 1,5KW F400

GENERAL DATA



CENTRIFUGAL DIRECT DRIVE SMOKE FAN WITH BACKWARD CURVED IMPELLER IN CASING - 400°C/2h

MANUFACTURING FEATURES

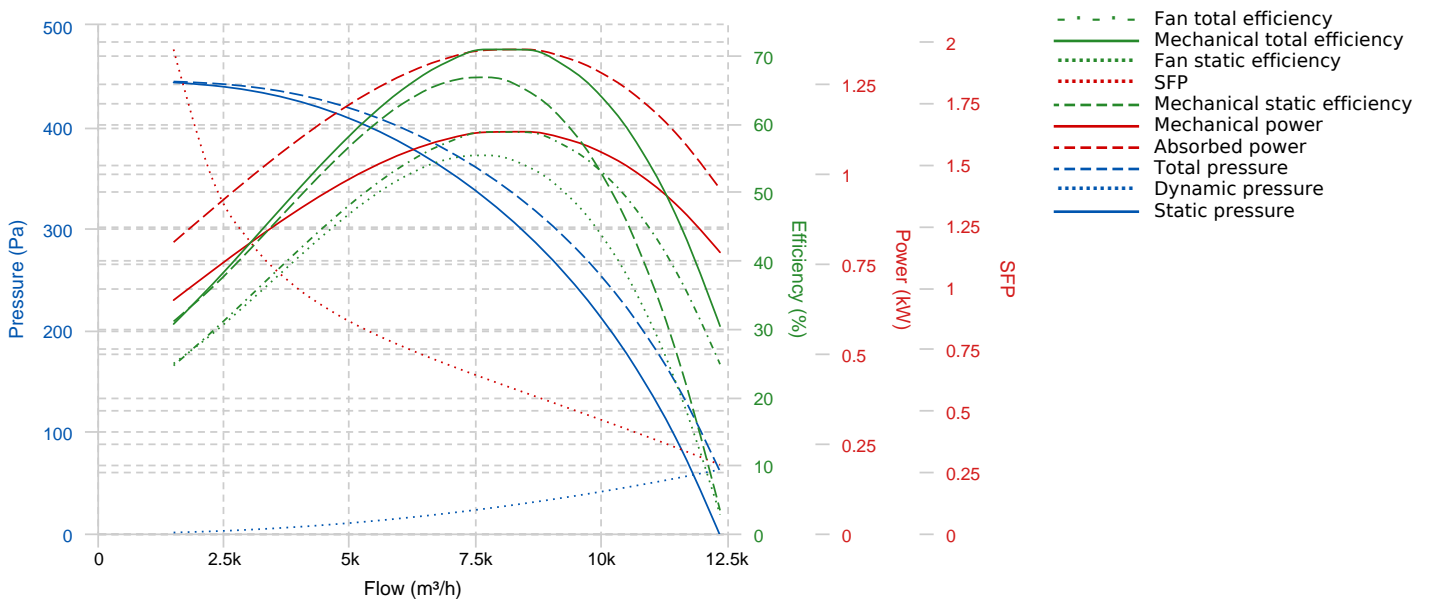
- Casing:
 - Made of galvanised steel sheet with upstream and downstream connecting flanges and access doors.
- Motor support:
 - Galvanised steel plate, motor with flanges fixed on 2 poles. Removable plate/support/impeller set.
- Impeller:
 - Backward impeller with self-cleaning system, in galvanised steel, dynamically balanced.
 - Direct drive on the motor shaft.
- Motor:
 - Three phase motor with IP-55 protection and F class insulation. Manufactured with standard voltages for one speed motors: 230/400V 50Hz up to 4 Kw and 400/690V 50Hz for higher powers of 4 and 6 poles.
 - 2 speed motors: Dahlander

APPLICATIONS

- Smoke extraction in high buildings and establishments with people.
- Ventilation and smoke exhaust in covered parkings.
- Ventilation in technical, industrial or commercial facilities.

Official homologation by the European laboratory APPLUS according to EN 12101-3:2015
Certification Nr: 0370-CPR-2728

PERFORMANCE CURVE

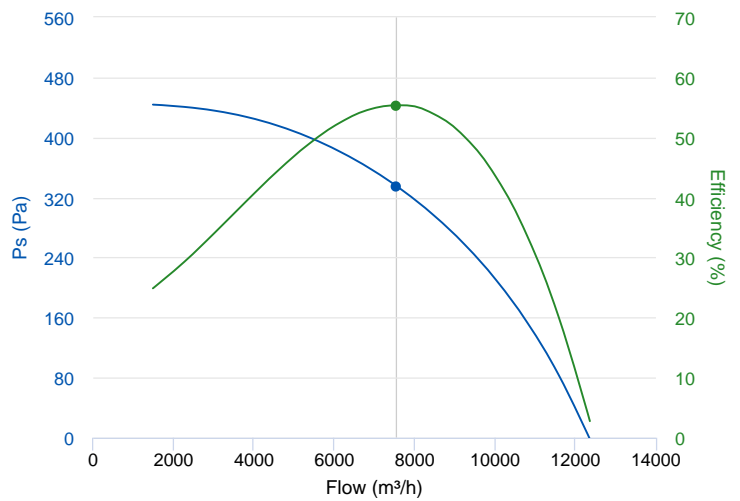


TECHNICAL DATA

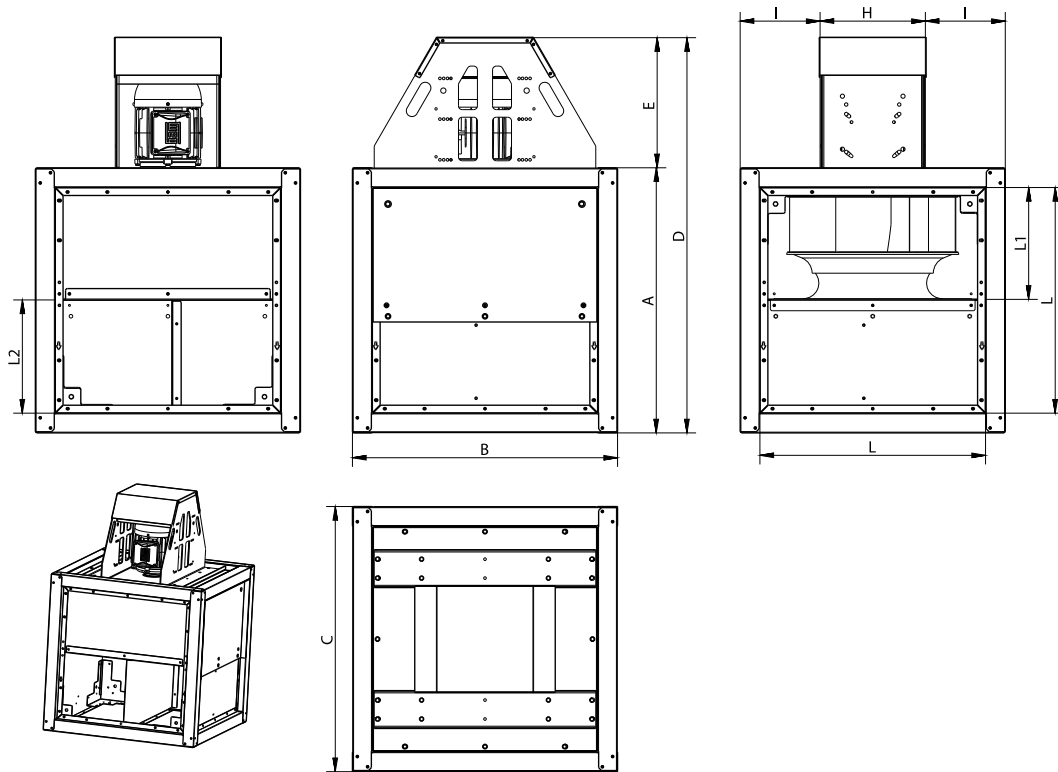
Fan							
RPM	940	Approx. weight	229 kg	Max. Flow	12360 m ³ /h		
Motor							
Power	1,5 kW	RPM	940	I max. (230V)	6,45 A	I max. (400V)	3,71 A
Size	100L	Approx. weight	28.5 kg	Efficiency (%)	82.5 %	FP	0.73

ERP DATA

Fan data sheet		
Fan type	Unit for non-residential ventilation (LOT 6)	
Typology	Unidirectional	
reports.other	None	
Type of driver	None	
Motor power (kW)	1.5	
	Fan values	ERP Requirements 2018
Max. efficiency (%)	55.38	43.82
Effic. Heat recovery (%)	-	
Pabs (kW)	1.342	
Flow (m ³ /h)	7556.35	
Static pressure (Pa)	334.89	
Speed (m/s)	6.26	
SFP (W/m ³ /s)	639.14	



DIMENSIONS

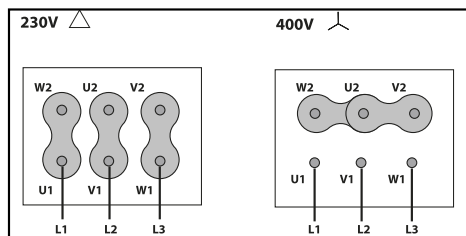


Dimensions (mm)

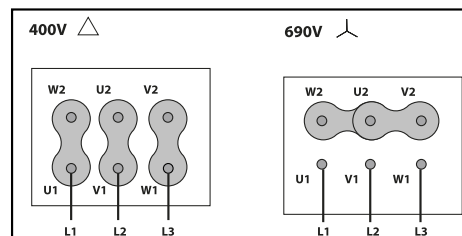
A	1000	B	1000	C	1000	D	1426	E	426
H	340	I	330	K	26	L	895,7	L1	366,8
L2	527,4								

WIRING DIAGRAM

230/400V



400/690V



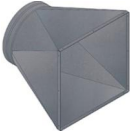
ACCESSORIES



SAFETY SWITCH
INT 25 3P A



SAFETY SWITCH FOR 400°C/2h
INT 400 25A 3P



OUTLET FLANGE FOR BCU
EI DHUMAT 630



BCU FEET KIT
DKF 630



OUTDOOR FLANGE WITH BIRD GUARD FOR BCU
VIS DHUMAT 630



FREQUENCY SPEED CONTROLLER
SFC 230 I 7A *

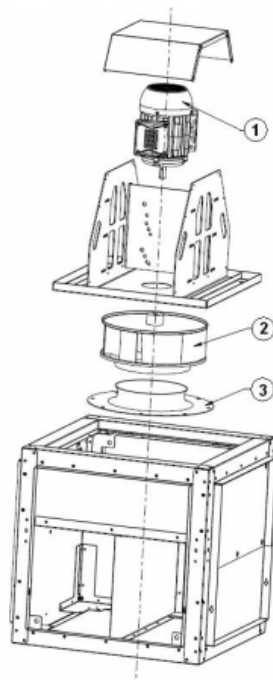


FREQUENCY SPEED CONTROLLER
SFC 400 III 5A *



ANTI-VIBRATION SPRING BLOCK
AVS (GENERIC)

SPARE PARTS



	Code	Model	Qty
1	721001254	MOTOR 1,5kW T6 B3 230/400V	x1
2	R-279639381	IMPELLER THRE R63B1 630X180x28 RD	x1
3	R-279631680	INLET CONE ED11 630	x1