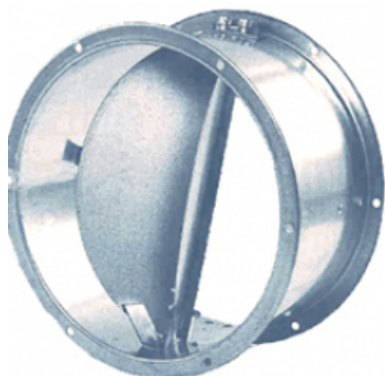


BSH 1120 ()

GENERAL DATA



HORIZONTAL OR VERTICAL OVERPRESSURE DAMPER

CONSTRUCTIVE FEATURES

The overpressure damper is used in duct on the supply side. This accessory is available for vertical (ODV) and horizontal (ODH) duct.

Designed to isolate the fan from the rest of the installation and thus avoid any risk of recirculation.

The fins of the ODH / ODV gate are opened by the air flow when the fan starts up and close under the effect of gravity when it stops.

The overpressure damper ODH / ODV (non-return) has the shape of an enclosure taking the dimensions of the diameters of the connection flange AC.

On this basis, two fins of sheet metal are adapted, each one of them turning on an axis that passes through the carcass, and they stop at the end of the race by means of two fixed stops to it.

Shutter made of cold galvanized steel sheet.

Maximum working temperature in the environment: 60°C

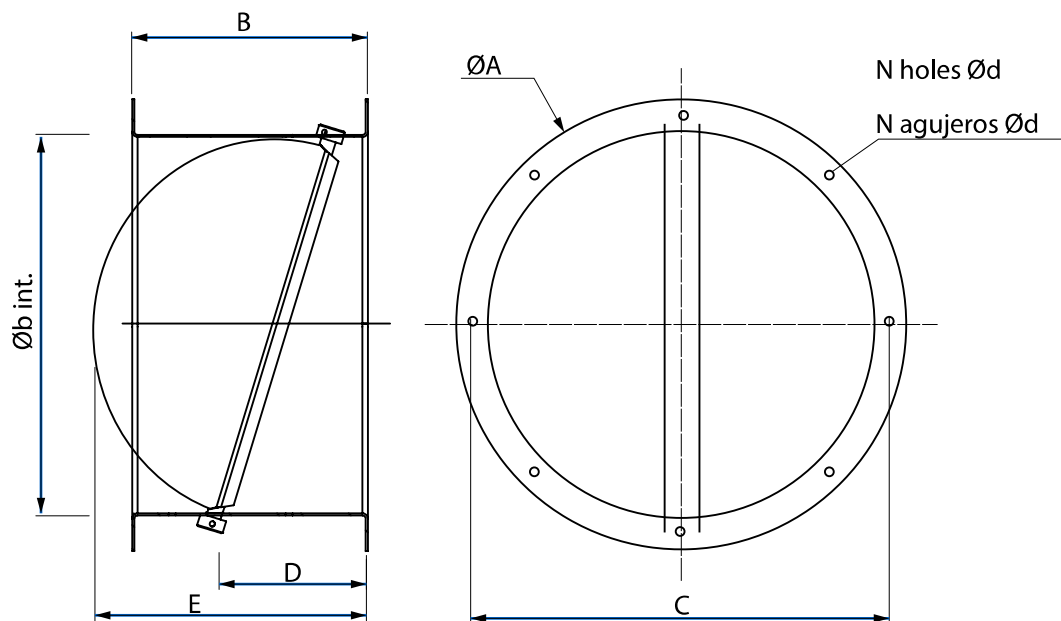
ON DEMAND

Made of stainless steel or aluminum.

TECHNICAL DATA

approx. weight 58.20 Kg

DIMENSIONS



Dimensions (mm)

A	1230	B	410	C	1190	D	220	E	565
---	------	---	-----	---	------	---	-----	---	-----

Dimensions (mm)

N	12	b	1132	d	15
---	----	---	------	---	----