

## MBI 12/12 ( )

### GENERAL DATA



#### OUTLET FLANGE FOR DD AND BD FANS

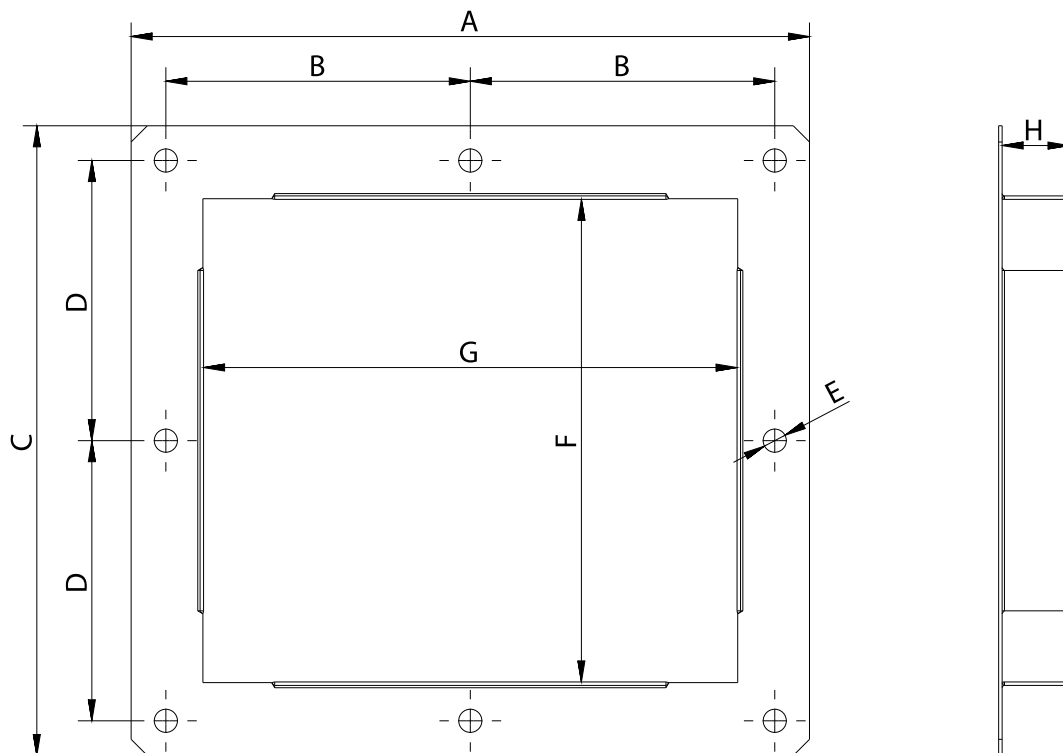
##### MANUFACTURING FEATURES

- To be installed in the outlet of low pressure fans (DD, BD) and made the connection to the duct easier.
- Made of galvanized seel.

##### UNDER REQUEST

- Possible spot welding on fans outlet.

### DIMENSIONS



#### Dimensions (mm)

A	455	B	212,5	C	400	D	185	F	339
G	394	H	30,9	Ø E	10				