

# BCU FIRE 400 T4 0,75KW F400 ( )

## GENERAL DATA



### CENTRIFUGAL DIRECT DRIVE SMOKE FAN WITH BACKWARD CURVED IMPELLER IN CASING - 400°C/2h

#### MANUFACTURING FEATURES

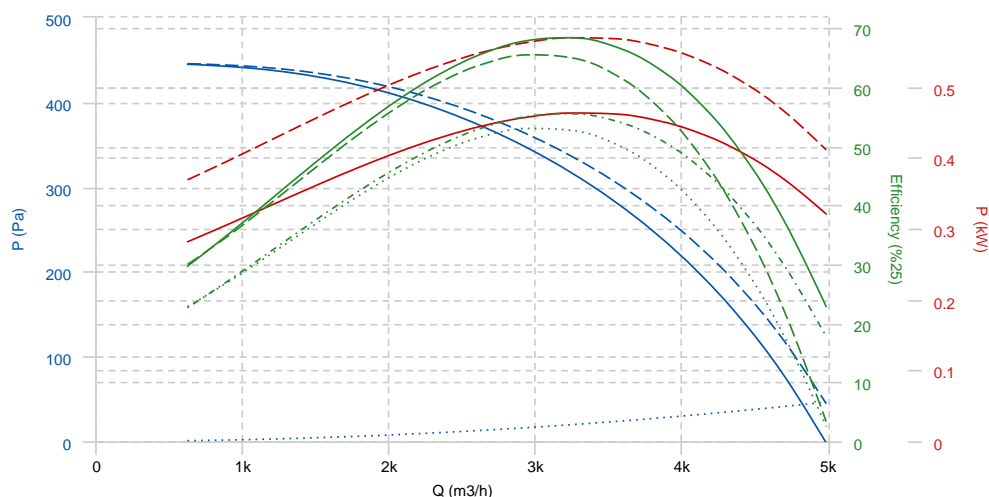
- Casing:
  - Made of galvanised steel sheet with upstream and downstream connecting flanges and access doors.
- Motor support:
  - Galvanised steel plate, motor with flanges fixed on 2 poles. Removable plate/support/impeller set.
- Impeller:
  - Backward impeller with self-cleaning system, in galvanised steel, dynamically balanced.
  - Direct drive on the motor shaft.
- Motor:
  - Three phase motor with IP-55 protection and F class insulation. Manufactured with standard voltages for one speed motors: 230/400V 50Hz up to 4 Kw and 400/690V 50Hz for higher powers of 4 and 6 poles.
  - 2 speed motors: Dahlander

#### APPLICATIONS

- Smoke extraction in high buildings and establishments with people.
- Ventilation and smoke exhaust in covered parkings.
- Ventilation in technical, industrial or commercial facilities.

Official homologation by the European laboratory APPLUS according to EN 12101-3:2015  
 Certification Nr: 0370-CPR-2728

## PERFORMANCE CURVE



- |                               |                                    |
|-------------------------------|------------------------------------|
| — Static pressure             | ..... Dynamic pressure             |
| - - - Total pressure          | - - - Absorbed power               |
| — Mechanical power            | - - - Mechanical static efficiency |
| — Mechanical total efficiency | ..... Fan static efficiency        |
| - - - Fan total efficiency    |                                    |

## TECHNICAL DATA

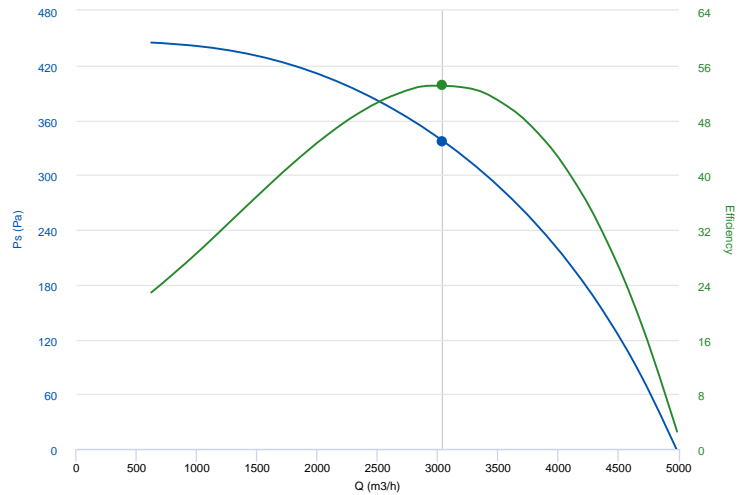
### Fan

RPM	1390	Approx. weight	84 kg	Max. Flow	4990 m <sup>3</sup> /h
-----	------	----------------	-------	-----------	------------------------

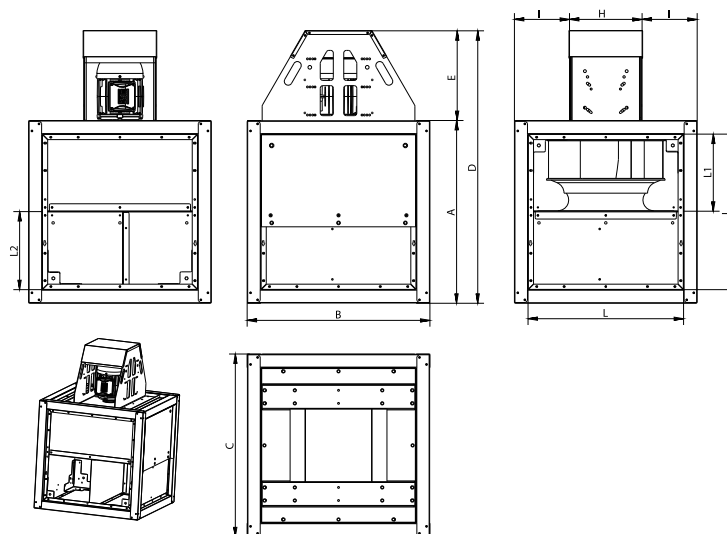
## ERP DATA

### Fan data sheet

Fan type	Unit for non-residential ventilation (LOT 6)	
Typology	Unidirectional	
reports.other	None	
Type of driver	None	
Motor power (kW)	0.75	
	<b>Fan values</b>	<b>ERP Requirements 2018</b>
Max. efficiency (%)	53.1	38.47
Effic. Heat recovery (%)	-	
Pabs (kW)	0.566	
reports.flow (m <sup>3</sup> /h)	3040.11	
Static pressure (Pa)	337.38	
Speed (m/s)	5.36	
SFP (W/m <sup>3</sup> /s)	669.84	



## DIMENSIONS



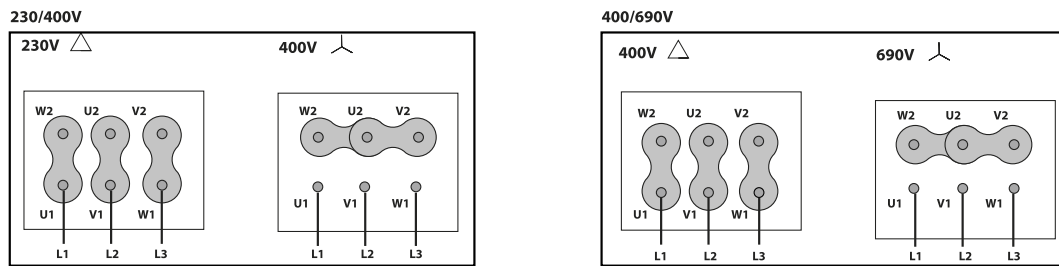
### Dimensions (mm)

A	700	B	700	C	700	D	1043,5	E	343,5
---	-----	---	-----	---	-----	---	--------	---	-------

Dimensions (mm)

H	278	I	211	K	26	L	595,7	L1	264,9
L2	329,6								

WIRING DIAGRAM



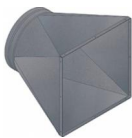
ACCESSORIES



**SAFETY SWITCH  
ISOSW 25A 1V**



**SAFETY SWITCH FOR 400°C/2h  
ISOSW FIRE 25A 1V**



**OUTLET FLANGE FOR BCU  
S2R BCU FIRE 400**



**BCU FEET KIT  
BCUF 400-450**



**OUTDOOR FLANGE WITH BIRD GUARD FOR  
{{fans:341:name}}  
VIS BCU FIRE 400-450**

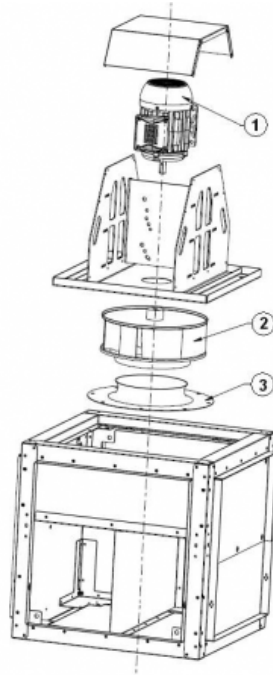


**FREQUENCY SPEED CONTROLLER  
FSCD 230 I 4,2A \***



**FREQUENCY SPEED CONTROLLER  
FSCD 400 III 2,2A \***

## SPARE PARTS



	Code	Model	RPM	Degrees
1	721001143	1 x MOTOR 0,75kW T4 B3 230/400V IEC80	-	-
2	279409381	1 x TURBINE THRE R63B1 400X140x19 RD	-	-
3	279401680	1 x INLET CONE ED11 400	-	-